

Aqara Smart Hotel Solution

2020 / 04

connecting connection

Part 1

Smart Hotel Solution

Aqara Smart Hotel Solution



Aqara smart hotel system support one-stop service including room booking by wechat, intelligent room control, 24h voice assistant, smart check-out, creating invoice, monitor power consumption and back-stage management, which can provide customer with easy and convenience experience.

Advantages: rich scene services; stable system; easy configuration; flexible extend; rapid implementation



Hotel Image

Use technology to build intelligence, Use intelligence to enhance experience.
Realize the new upgrade of hotel positioning and create a new image of smart hotel



Enhance the Experience

A full set of smart IoT control system which is easy to operate.
Convenient technology brings quality services



Improve Management Efficiency

Strong back-stage management to improve efficiency, smart scene to save energy



Authority Management

Flexible management of permissions

continuous connection

Self-service Check-in/Check-out

One-stop self-service experience from check-in to check-out, reducing labor costs

Self-service Check-in

ID verification, face recognition, PSB authorization

Self-service Check-out

self-help creating invoice

Reduce Labor Cost

standardized service; no contact check-in/check-out;
reduce waiting time



Welcome Scene

Scene Description

The light gradually brightened, air conditioner turns on, the curtain close slowly and the voice assistant report "Hello Mr. Chen, welcome to 7 Days Inn " after the card was inserted

Product List

- Card Switch
- Smart Wall Switch
- Constant Current Driver
- Dimmer Module T1
- Dimmer Module T1(0-10V)
- Air Conditionor
- Smart Curtain Controller
- Hub



Working Scene

Scene Description

Automatically turn off the TV, turn on table lamp and adjust light effect to appropriate brightness.

Product List

- Smart Scene Panel S1
- AC Conditioner
- Smart Wall Switch
- Smart Wall Outlet
- Constant Current Driver
- Dimmer Module T1
- Dimmer Module T1(0-10V)
- Light Sensor
- Hub



Movie-Watching Scene

Aqara

Scene Description

Automatically turns on TV, slowly close curtain and adjust to appropriate brightness

Product List

- Smart Scene Panel S1
- Smart Wall Switch
- Constant Current Driver
- Dimmer Module T1
- Dimmer Module T1(0-10V)
- Hub



continuous connection

Sleep Scene

Scene Description

- Automatically turns off TV;
- Slowly close curtain
- Adjust to appropriate brightness
- Real-time monitor temperature
- Adjust Air conditioner automatically

Product List

- Air Conditioner Partner
- Temperature and Humidity Sensor
- Smart Scene Panel S1
- Smart Wall Switch
- Hub



Night Scene

Scene Description

- Get up in the middle of the night, night light turns on
- Go back to bed, night light turns off

Product List

- Hub
- Motion Sensor



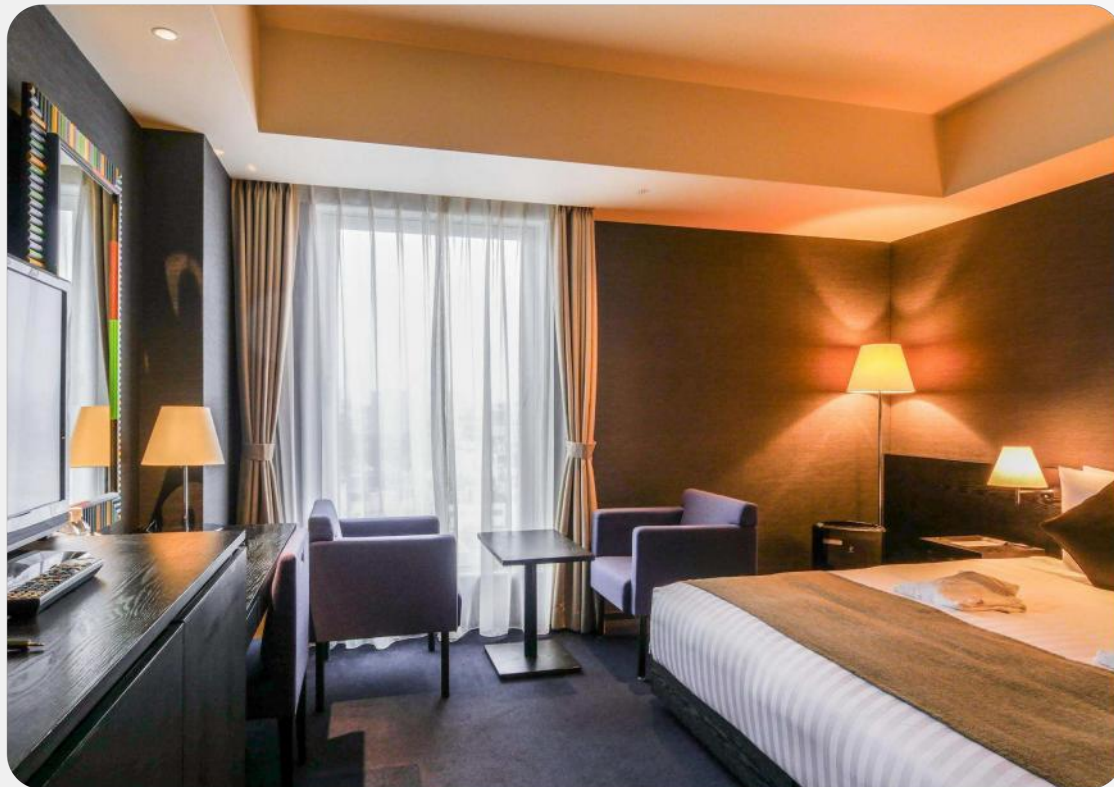
Get up Scene

Scene Description

When it's time to get up, the lights slowly turn on and the soothing wake-up music begins.

Product List

- Constant Current Driver
- Dimmer Module T1
- Dimmer Module T1(0-10V)
- Voice Assistant
- Hub



Clean/Don't Disturb the Scene

Scene Description

Trigger “Not Disturb Mode” or “Clean Mode” by pressing wireless switch or voice assistant.

Product List

- Smart Scene Panel S1
- Wireless Remote Wall Switch
- Voice Assistant
- Hub



Check-out Scene

Scene Description

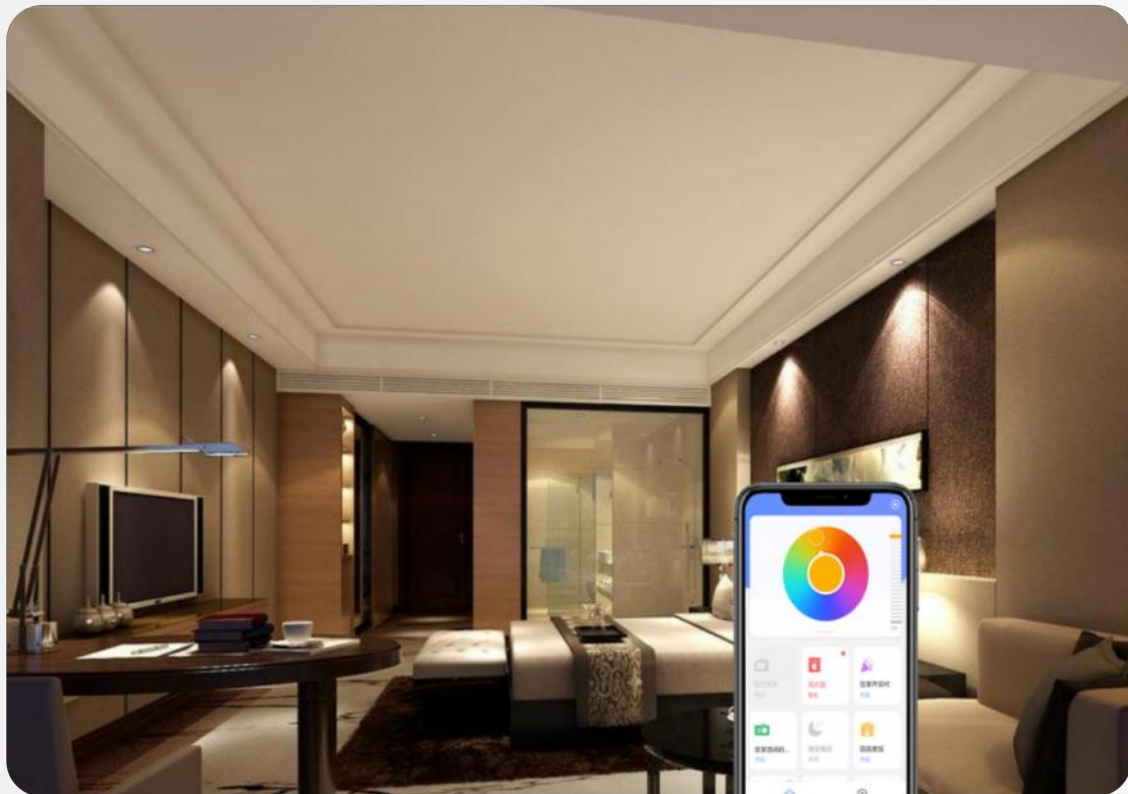
- Trigger “Away Mode” without card inserted for 30s.
- Turns off lights air conditioner
- Open curtain
- Lock devices
- Window not-close notification

Product List

- Card Switchc
- Curtain Controller
- Constant Current Driver
- Dimmer Module T1
- Dimmer Module T1(0-10V)
- Door and Window Sensor
- Hub



After checking in, customer can scan the code to enter the WeChat small program to easily control the devices in the room. After checking out, the control permission will be automatically revoked.



continuous connection

One Press to Control Scenes



Customer can switch to different modes like reading mode, movie watching mode etc. by simply press Wireless Remote Switch or Smart Scene Panel S1



continuous connection

Voice Assistant Control

Aqara

Customer can switch to different modes like reading mode, movie watching mode etc. by sending command to Voice Assistant



continuous connection

Part 2

Related Products

Power Supply Card

Working as a sensor to trigger power supply, power cut off and linkage the smart devices to realize Welcome Mode and Away Mode



Enable Away Mode after removing card for 30s:
lights off, turn off Air conditioner, open curtain, lock devices, windows not close detection...



Enable Welcome Mode when card inserted:
Lights on, turn on air conditioner, close curtain, unlock devices, door's unclosed detection, play welcome speech...

Smart Curtain Controller

Aqara

- One key to close/open curtain
- Pull to start automatically
- Timing Setting
- App Control
- Automation



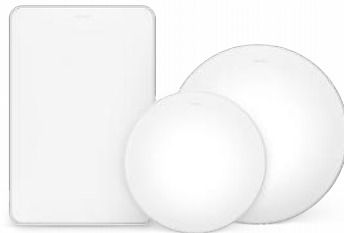
continuous connection

Smart Lights



Smart control the hotel lights of ceiling lights, LED bulbs etc; Support color, color temperature brightness adjustment of downlights, spotlights, light stripe

- light sequence
- brightness adjustment
- colour temperature adjustment
- color adjustment
- voice control
- app control
- linkage



Aqara | OPPLA Ceiling Light



Aqara LED Light Bulb



Constant Current Driver



Dimmer Module T1



Dimmer Module T1 (0-10V)



continuous connection

Switches and Sockets

Turn the dumb devices into smart ones. Power on and off, support voice control, remote control, timing control and other functions.

- Voice Control
- Remote Control
- Timing Control
- App Control
- Automation



智能插座



智能墙壁插座



智能墙壁开关

Scene Panel S1 can work with H1 Pro wall switch



智能墙壁开关 H1 Pro



智能场景面板开关 S1



Motion Sensor



Door and Window Sensor



Temperature and Humidity Sensor

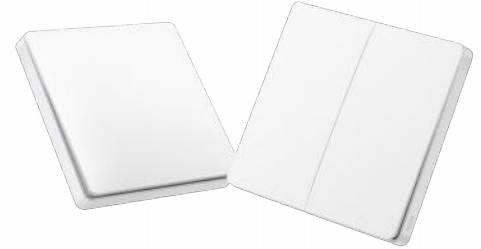


Light Sensor

Wireless Switches



Wireless Mini Switch



Wireless Wall Switch



Wireless Scene Switch

Through the smart hotel management platform, customer management and room control will be more efficient and smart. Big data and user analysis can provide perfect data support for the hotel operation.

Role Management

- Administrator Authorization
- Permissions Combination
- Manage Permissions by Role
- Operation Log of Each Role

Device Management

- Remote Monitoring
- Device Status
- Scene Control
- Enable/Disable Device
- Debug and Maintenance

Guest Management

- Accommodation Status
- Services Order
- Pending Status
- Voice Reminder
- Task Allocation

Data Analysis

- Devices Operation Statistics
- User Activity Statistics
- Power Consumption Statistics
- Environmental Monitoring
- Alarm Statistics
- Consumption Statistics

Part 3

Advantage of Lumi

No Need Rewiring

- Free hotel from trouble of line rebuilding
- Cost little but change more

No Equipment Replacement

- Only replace dumb switches with Aqara smart ones
- No need to replace other equipments in guest room

Short Construction Period

- 15-60 mins/room

No Closure

- Zero noise, no impact on hotel customer.
- Hotel upgrade service can be completed without closing down

No Threshold

- Easy Installation
- Save installation time and labor costs

Part 4

Solutions

Products	Location
Smart Curtain Controller	Cloth Curtain/Sheer Curtain
Special Rails for Curtain Controller	Curtain Box on the Top
Smart Speaker	Desk

Deluxe Version for Standard Room

Products	Location
Motion Sensor	cabinet base (left&right) bathroom(door, top) top of the gate
Temperature and Humidity Sensor	bedside
Voice Assistant	bedside
Scene Switch	bedside
Smart Wall Outlet	bedside, TV
Smart Door Plate	door
Smart Wall Switch	door side, bedside
Smart Curtain Controller	cloth curtain/sheer curtain
Special Rails for Curtain Controller	curtain box on the top

Products	Location
Smart Door Lock	entrance door
Card Switch	entrance door side
Door and Window Sensor	toilet, window
Smart TV	TV bench
Waterproof Speakers	bathroom (top)
Waterproof Panel	bathroom (wall)
Ultraviolet Radiator	bathroom, guest room
Light Controller	downlight; spotlight
Air Cleaner	guest room
Foam Machine	bathroom
Aromatherapy diffuser	Desk



On Automation Technologies LTD

Aqara exclusive representative in Nigeria

sulan@onafrica.tech
Phone:08144226743

Address: 2nd Floor, 20 Layi yusuf crescent, Lekki Phrase 1, Lagos, NG